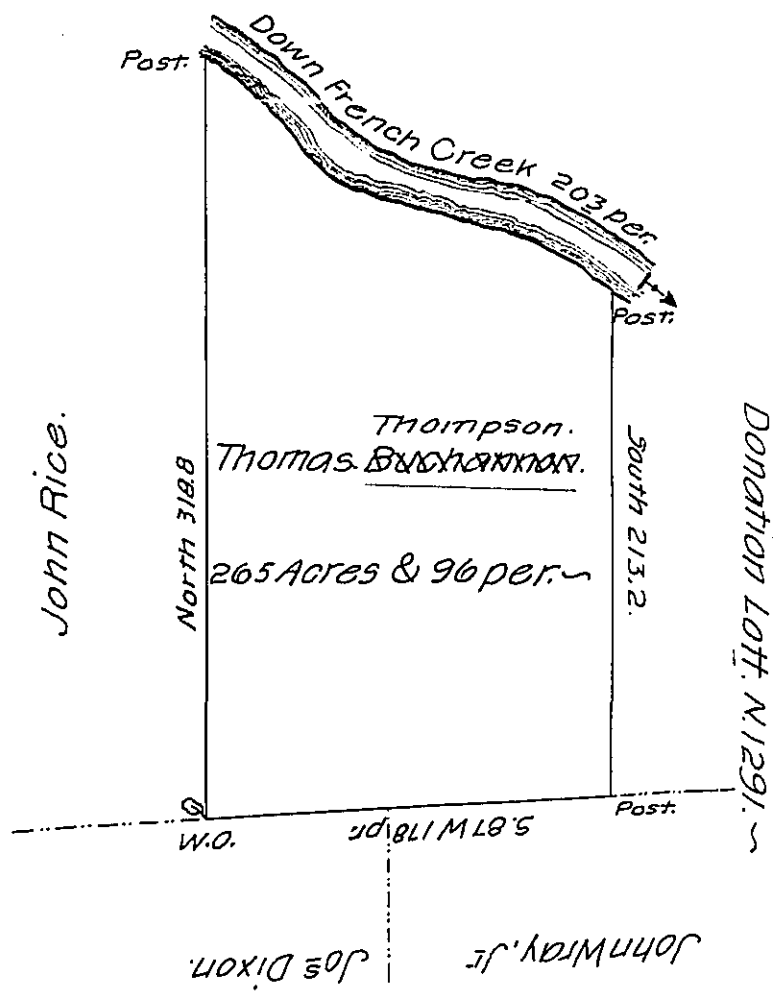


River Courses.

$5.63^{\circ} E 15$   
 $5.41^{\circ} E.52$   
 $5.74^{\circ} E.104$   
 $5.50^{\circ} E.34$   
203 per.



Situate on and adjoining the West side of French Creek in Allegheny  
 County Containing 265 Acres and 96 perches and All<sup>se</sup> of six p<sup>er</sup> Cent  
 for Roads & Surveyed the 15<sup>th</sup> day of May 1795 In pursuance of his  
 Improvement Bearing Date the 1<sup>st</sup> day of April, 1795 ~

W<sup>m</sup> Power, D<sup>ys</sup>

To Dan<sup>l</sup> Brodhead, Esq<sup>r</sup>,  
 Surveyor General.

IN TESTIMONY that the above is a copy of the original remaining on file in  
 the Department of Internal Affairs of Pennsylvania, made  
 conformably to an Act of Assembly approved the 16th day of  
 February, 1833, I have hereunto set my Hand and caused  
 the Seal of said Department to be affixed at Harrisburg,  
 this seventeenth day of October, 1906

*Laack P. Brown*  
 Secretary of Internal Affairs